



Vrije Universiteit Brussel  
FACULTEIT VAN DE WETENSCHAPPEN  
ONDERZOEKSGROEP MICROBIELE INTERACTIES

SINECURA  
Zwaantjesstraat 38  
9090 Melle

## ANALYSIS REPORT

---

**Type:** Ash content/Microbiol. anal./  
Toxic metals/Pest. Residu

**Sample:** Ligusticum wallichii, radix

**Analyst:** KD

**Date of analysis:** 10/10/16 - 04/12/16

**Reference:** PLKDA/TA 16/083

---

**Sample code:** 5270-G14129

**Received on:** 09/08/16

**Condition:** Closed plastic container, sealed.

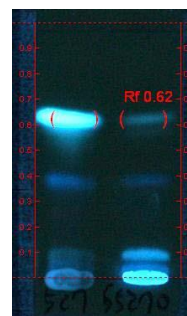
**Sample storage until analysis:** dark/room temperature.

**Remarks:**

Sampling was not carried out by the laboratory.

### Identity

Identity : conform  
Reference : IPF / 7.6.16  
Reference : 7.6.16



A. 5270 ref. Std soln  
B. Cg5270 product soln  
TLC plate - Silica gel 60F254 (Merck)

### Ash values

	Rep. 1	Rep. 2	Mean
Total ash content	2,9 %	2,5 %	2,7 %
Acid insoluble ash content	0,1 %	0,1 %	0,1 %

### Microbiological analysis

	Measured in sample	Maximal tolerated value
Aflatoxine B1	Pass	<2.5 ppb
B2	Pass	< 2.5 ppb
G1	Pass	< 2.5 ppb
G2	Pass	< 2.5 ppb
<i>Bacillus cereus</i>	< 100/g	< 10.000/g
<i>Escherichia coli</i>	< 10/g	< 100/g
<i>Salmonella</i>	Absent/25 g	Absent/25 g
Total Aerob. Bact.	< 10.000/g	5.10 <sup>6</sup> /g
Total Yeasts and Moulds	< 10.000/g	< 100.000/g

### Analysis toxic metals

Method: ICP-MS for all elements except Hg.  
Hg by Cold-Vapor-AAS.

Compound	Rep. 1	Rep. 2	Mean	Maximal tolerated value
Arsenic (As)	0,19 ppm	0,16 ppm	0,18 ppm	3.0 ppm
Cadmium (Cd)	0,03 ppm	0,02 ppm	0,03 ppm	1.0 ppm
Lead (Pb)	0,14 ppm	0,11 ppm	0,13 ppm	3.0 ppm
Mercury (Hg)	0,01 ppm	0,01 ppm	0,01 ppm	0.2 ppm

## Analysis pesticides

All compounds tested\* conform Eur. Pharm., except

sum (alpha, chi en oxy-chlordane) < 0,075 mg/kg.\*

sum (heptachlor, -epoxides) < 0,075 mg/kg\*

sum (PCAB, PCNB) < 0,05 mg/kg\*

cyfluthrin < 0,15 mg/kg\*

fenpropathrin < 0,05 mg/kg\*

No residues detected \*.

\*: list available on request.

|



Date: 04/12/16

Dr. K. Demeyer  
Responsible analysis